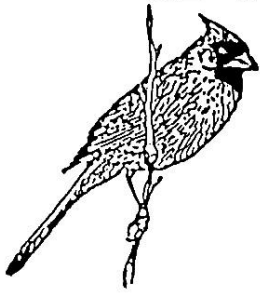


BIRD'S-EYE VIEW



PEORIA AUDUBON SOCIETY

A CHAPTER OF NATIONAL AUDUBON SINCE 1981.
ORNITHOLOGICAL/AUDUBON SECTION OF THE PEORIA ACADEMY OF SCIENCE SINCE 1930.

MAY - JUNE 1991

NOTES FROM THE PRESIDENT:

It is encouraging to receive more and more requests for the Peoria Audubon Society to participate in earth days, garden shows, harvest fairs and other environmental activities due to increasing public interest. We do not have the volunteer time, however, to meet all the requests, particularly this year when the main priority is finishing the breeding bird atlas project. We did participate with a display as part of the Peoria Academy of Science at the 1991 River City Garden Show in March.

The garden show was a good choice for an Audubon display because people were looking for ideas and information to improve their yards and other properties. Plantings and bluebird houses were two ideas suggested to increase the habitat available for wildlife. Individual efforts to provide improved habitat add up to large changes over an area. The next conceptual step after doing what you can do on your own property is to think about improvements in wildlife habitat on an area basis, particularly for some of the rarer species.

Maury Brucker

Pledge Form: Peoria Audubon Society's 5-4-91
SPRING BIRD COUNT/"BIRD-A-THON"

Sponsor's Name: _____
Address: _____
City/State: _____ Zip: _____

I wish to make a general contribution of \$ _____
OR
I wish to sponsor (Participant/Team/County): _____
Amount pledged per species \$ _____.

Give to participant or mail to Mrs. Greet Princen, Treasurer, Peoria Audubon Society, 677 E. High Point Terr., Peoria, IL 61614. An Audubon member will contact you with the total number of species sighted by a participant/team/county after May 4th. Please make checks out to the Peoria Audubon Society. Thank you for your donation.

SPRING BIRD COUNT DAY & "BIRD-A-THON":

Volunteers are needed as sighters, counters, and drivers for our May 4th count which covers six area counties. Please call one of the county leaders to volunteer for a good cause.

Fulton Co. - Virginia Humphreys/682-0418
Mason Co. - Dick Bjorklund/677-3012
Peoria Co. - Eleanor Voeste/697-0353
Stark Co. - Maury Brucker/493-5181
Tazewell Co. - Louise Endres/682-8500
Woodford Co. - John Todt/694-3948

As a fund-raising project we have a Bird-a-thon along with our Spring Bird Count. You are asked to back a participant, team, or county and pledge a certain amount of your choice per number of species seen that day. (Ave. = 65 to 100 species). Example: 5¢ per species times 75 species = \$3.75; 10¢ per species times 75 species = \$7.50. The money earned does not go for prizes, but is split between our Great Lakes Regional Office for conservation efforts, and our Peoria (six counties) area conservation endeavors.

A general donation or species pledge amount will be greatly appreciated. Those making species pledges should notify a participant or mail the provided form to Greet Princen. You will then be notified after May 4th with the number of species sighted by the participant/team/county you sponsored. Checks should then be made out to the Peoria Audubon Society (be sure to indicate it is a donation), and mailed to Mrs. Greet Princen, Treasurer, Peoria Audubon Society, 677 E. High Poin Terr., Peoria, IL 61614.

Join the fun and excitement on May 4th. Thank you for your support.



JOIN THE TEAM!

Cindy Holloway,
"Bird-a-thon" Chairman

CONSERVATION COMMENTS:

Recent research has found that approximately 50% of river siltation comes from the action of the streams themselves in the watershed. This siltation results from erosion of the stream-banks and "slumping" of large portions of the bank into the stream. However, this is not to say that efforts to control erosion by certain agricultural practices such as terracing, contour farming, no-til or reduced-til, and filter strip planting aren't necessary for controlling a significant portion of the river sedimentation such as that we find in the Illinois River.

The Illinois Dept. of Conservation publication, Outdoor Highlights Vol. 19(4): 14-17, indicates that stream bank preservation includes such practices as driving upright long stakes of willow into the banks. Willows and sycamore, buttonbush, red-osier dogwood, and cottonwood are most effective. The stakes, especially willow, rapidly take root, become immovable, and thus hold the soil as well as collecting silt during high water. Video tapes describing bank stabilization techniques are available from Bill White (D.O.C.) at (207) 782-3715, or by writing to D.O.C., Div. of Planning, Flood Plain Planning Program, 524 S. Second Street, Springfield, IL 62701-1787.

PLEASE TELL EVERYONE YOU KNOW THAT THE RESULT OF BALLOON RELEASES IS DEATH OF WILDLIFE DUE TO CHOKING, TO SAY NOTHING THAT IT IS LITTERING.

John L. Richard, Conservation Chair

Follow-up: Death by Balloon (and Other Plastic Materials)--A study by the Univ. of Texas Marine Science Inst. shows that 5% of the dead sea turtles stranded on the south Texas coast had ingested balloons. They are mistaken for jelly fish, swallowed, and get hung up in turtle's stomachs causing starvation. How far can balloons travel? One found on a New Jersey shore was released in Warren Ohio; and another picked up in Virginia came from San Diego. Latex balloons start to degrade after 5 to 6 months, while silver mylar balloons can last for years. We must stop the release of balloons outdoors, and do a better job of evaluating the possible negative impacts of products before we dump them into the environment.

(Condensed from an article by Kelina Cimbal in the Summer 1990 issue of the New Jersey Audubon Magazine.)

Be sure to write your "pros" and "cons" on environmental issues to our elected officials:

Sen. Paul Simon	Gov. Jim Edgar
U62 Dirksen Building	Room 207 - State House
Washington, DC 20510	Springfield, IL 62706

Sen. Alan Dixon	Con. Robert Michael
331 Hart Building	100 N. E. Monroe
Washington, DC 20510	Peoria, IL 61603

Info. from March 1991 AUDUBON ACTIVIST---
News from McDonald's, the fast food chain:

1. Their new packaging chosen to contain their hamburgers and hot drinks fails the recycling test--it has a plastic coating. Such mixing of materials makes recycling impossible at today's current level of affordable technology. The Environmental Defense Fund, which supports McDonald's switch, will continue to work with them to develop packaging that can be composted. The new coated paper wrap is, however, lighter in weight, smaller in volume and takes less energy required in its manufacture, resulting in less pollution.

Mercedes B. Lee, a policy analyst for Audubon's Science Dept., says that the improvement is not that much. "People are clearly tired of being part of the garbage problem. Urge all manufacturers to use less packaging with the products they sell, and to constantly search for innovative ways to reduce, reuse and recycle."

2. McDonald's is considering using washable dishes for in-store customers. Write to tell them you think it's a good idea: McDonald's Corporation, Customer Relations Department, McDonald's Plaza, Oak Brook, IL 60521.

3. Soon we should be seeing a new "happy meals" offered by McDonald's for children. They will have flower and vegetable seed packets, gardening tools, and a bird feeder available for children. This is a good "hands-on" experience they should really enjoy.



DON'T FORGET---For some fun this summer, be sure to volunteer your time to help us with our Breeding Bird Atlas Survey. Area leaders are always glad to have help when surveying their blocks. For more information, call Bert Princen at 691-0519.

FOLLOW-UP TO MID-WINTER BALD EAGLE COUNT of 2-2-91:
(Information from Terry Ingram, Head Coord.)

1. Over 95% were counted between 8 and 10 AM.
2. Greatest number of eagles since 1980 = 1,409.
3. Almost 1/3 were at Mo. R. Lock & Dam #16 & 18.
4. The immature percentage of 24.67% is lowest since 1985; only twice in last 25 years has the immature count been lower.
5. Numbers were up on the Missouri R., but down on the Illinois and Wisconsin Rivers.
6. We were credited with 85 of the 94 Bald Eagles we counted between Henry and Havana--some must have been considered duplicate counts.
7. A few wintering communities have almost disappeared, down to a few birds from 40 to 50; yet, some communities are increasing and doing well.
8. The record low of immature eagles follows on 8 to 10 successive years of the Fed. Gov't. reporting record reproductions during the summers. Thus, the number of immatures should be increasing and not decreasing.
9. Main concern now is to study where the young eagles have gone or what has killed them off.

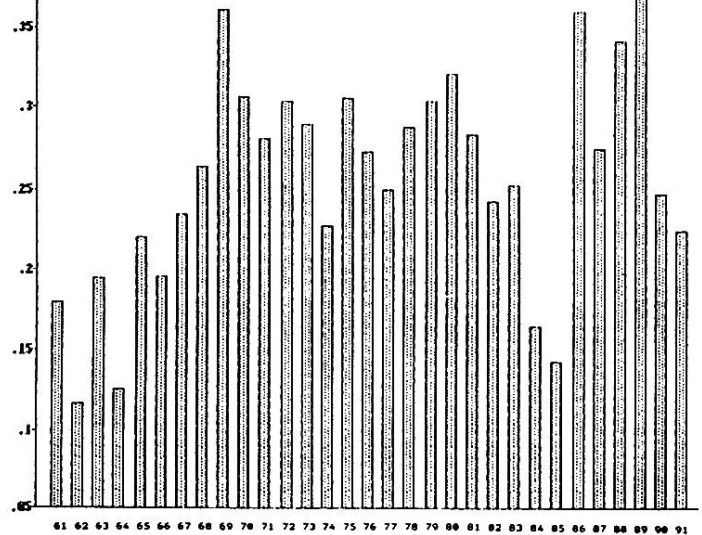
March 11, 1991 Annual Midwinter Bald Eagle Count Compiled by Terry Ingram

Location	Adults	Immature	Unknown	Total	Percentage Immatures of Known Ages	Percentage Immatures of All Eagles
Wisconsin River						
P'well to Ferry Bluff	2	0	0	2	.00%	.00%
Prairie du Sac	13	9	1	23	40.91%	39.13%
Grant County	26	5	0	31	16.13%	16.13%
Subtotal	41	14	1	56	25.45%	25.00%
Illinois River						
Henry	11	5	0	16	31.25%	31.25%
South	15	6	0	21	28.57%	28.57%
Rice Lake & Area	34	7	0	41	17.07%	17.07%
Chautauqua Wildlife	5	2	0	7	28.57%	28.57%
South	3	0	0	3	.00%	.00%
Pike County	40	53	0	93	56.99%	56.99%
Hardin to Pearl	16	7	0	23	30.43%	30.43%
Subtotal	124	80	0	204	39.22%	39.22%
Missouri River	14	14	0	28	50.00%	50.00%
Ill. & Mo. Subtotal	138	94	0	232	40.52%	40.52%
Mississippi River						
Alma-Buffalo	2	0	0	2	.00%	.00%
Fountain City	5	5	0	10	50.00%	50.00%
North of La Crosse	5	4	0	9	44.44%	44.44%
Genoa- Blackhawk	22	4	0	26	15.38%	15.38%
Desoto	16	0	0	16	.00%	.00%
Lansing Power Plant	12	3	0	15	20.00%	20.00%
Lynxville	1	0	0	1	.00%	.00%
Cassville Area	28	9	0	37	24.32%	24.32%
Dubuque Area	3	1	0	4	25.00%	25.00%
Savanna Arm Depot	95	19	3	117	16.67%	16.24%
Iowa Fields	7	3	0	10	30.00%	30.00%
Lock & Dam #12	18	8	0	26	30.77%	30.77%
Lock & Dam #13	31	6	4	41	16.22%	14.63%
Lock & Dam #14-15	57	51	0	108	47.22%	47.22%
Lock & Dam 16 - 18	246	50	98	394	16.89%	12.69%
Miss. River Subtotal	548	163	105	816	22.93%	19.98%
Lock & Dam 19 - 23	157	19	21	197	10.00%	9.64%
Lock & Dam 24 - 26	20	1	0	21	4.76%	4.76%
Wildlife Refuges	1	0	0	1	.00%	.00%
Grafton	34	18	1	53	.00%	.00%
St. Louis	0	0	0	0	.00%	.00%
South	23	6	4	33	20.69%	18.18%
Subtotal	235	44	26	305	15.77%	14.43%
Subtotal North of MO	589	177	106	872	23.11%	20.30%
Grand Total	962	315	132	1409	24.67%	22.36%



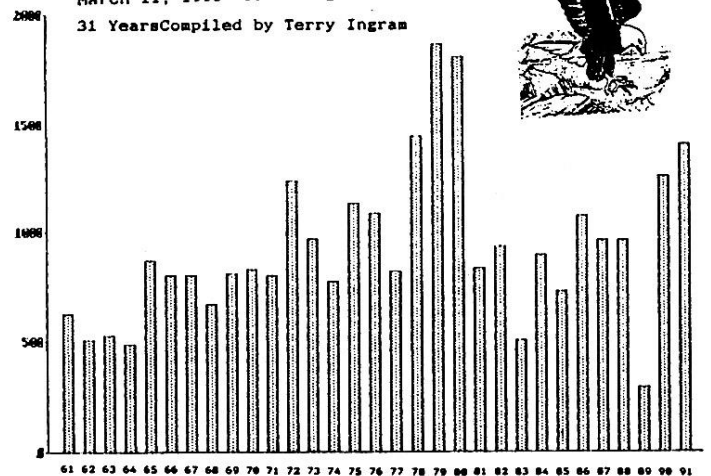
Percent Immatures Graph

March 11, 1991 Percent Immatures Over the Past
31 Years Comp/Terry Ingram



31 Years Total

March 11, 1991 Total Eagles Counted for
31 Years Compiled by Terry Ingram



RECYCLING NEWS:

Bring your used greeting and holiday cards to our meetings. Marj Tattersall's father works for Travelers Protective Assn. of Amer. (a non-profit fraternal service organization) which sends used cards to the Educational Tape Recording for the Blind, Inc. in Evergreen Park, Illinois. The covers and verses are cut out to make new cards which are sold for 25¢ each. The money purchases tapes for educational and recreational use by the blind.

Tazewell Animal Protection Society (TAPS)
at 2701 Allentown Road, Pekin, IL 61554,
(309) 353-8277 is in need of the following:

Paper/cloth towels	Old Newspapers
Books for book sale	A wheelbarrow
Adult dog/cat food	Litter
Purina Puppy Chow	Bleach
33 Gal. + Plastic	
Bags.	

AUDUBON ADVENTURES



P. 4

The above owl logo stands for "Audubon Adventures", a classroom-based club program for 4th, 5th, and 6th grades. It helps students to develop an interest in the natural world by providing information and opportunities for exploring nature. Some of the topics covered are: recycling, endangered species, mammals, and songbirds.

A classroom of up to 32 students costs \$30 per school year. (For larger classes, the cost increases \$30 per each additional 32 students.) Teachers receive a teaching guide and posters, while the students receive their own copy of the "Audubon Adventures" newspaper with many interesting and educational articles, games and puzzles, and hands-on projects to complete.

If you are a teacher interested in obtaining this program for your students, or if you wish to make a donation and become a sponsor of a class, please contact Maury Brucker, R. R. #1 - Box 35, Wyoming, IL 61491, (309) 493-5181.

RECENT SIGHTINGS:

Lesser Yellowlegs on Wayne Road--V. Humphreys.
Bonaparte's Gull--L. Augustine
Sora and Smith's Longspurs in farm field by
Caterpillar's Tech. Center, Mossville, IL.
Bittern near Roanoke--B. Onken
Common Loon in Tazewell Co.--L. Endres
Golden Plovers in farm field along Old Galena
Road--B. Princen
Yellow-Throated Warbler at old Hite's Place--
L. Augustine
Yellow-phase House Finch at his Peoria feeder--
J. Richard. (See note in Nat'l. Geo's. book)
Yellow-Rumped Warblers have started coming thru.

CALENDAR OF EVENTS:

MAY:

- 4 - Spring Bird Count and "Bird-a-thon".
(See article on P. 1.)
- 5 - Early Worm Bird Walk at Forest Park
Nature Center, 6 AM, open to public.
- 8 - Monthly Membership Meeting, 7:30 PM,
Lakeview Museum, Room A/B. Program:
Spring Bird Count Reports of the six
counties covered. (Board meeting at
6:30 PM). NOTE: Last membership mtg.
until September 11th.
- 11 - Warbler Walk, 7:30 AM at Forest Park
Nature Center. Dale Goodner will lead
a 2-hour walk on the center trails.
There will be a short break, and then
for those interested, we will carpool
to Singing Woods by Dunlap.
- 12 - Early Worm Bird Walk at Forest Park
Nature Center, 6 AM, open to public.

JUNE:

- 8 - Breeding Bird Atlas blockbuster day in
Southern Fulton County. Call Bert
Princen for details. (Date tentative).
- 29 - Breeding Bird Atlas blockbuster day in
Southern Mason County. Call Bert
Princen for details. (Date tentative).



"Bird's Eye View" is published bi-monthly by the Peoria Audubon Society. The next article deadline date will be June 10, 1991. Send or call all items of interest to: Marjorie Tattersall, Editor, Peoria Audubon Society, 915 W. St. Mary's Ct., Peoria, IL 61614. (309) 692-2247.

Officers... President, Maury Brucker
Vice Pres., Brenda Onken
Secretary, Greg Brown
Treasurer, Greet Princen
Conservation, John Richard

Board..... Dick Baird (1 yr.)
Bill Beeson (2 yrs.)
Lu Ann Elwood (2 yrs.)
Cindy Holloway (1 yr.)
Melissa Pierson (1 yr.)
Paul Pierson (2 yrs.)
Marj Tattersall (Past Pres.)

Chairs.... Field Trips & Surveys - open
Hospitality - open
Membership - Louise Endres
Newsletter - Marj Tattersall

Information... Greet Princen (309) 691-0519
Maury Brucker (309) 493-5181

PEORIA AUDUBON SOCIETY
PEORIA ACADEMY OF SCIENCE
1125 W. LAKE AVENUE
PEORIA, IL 61614



NON-PROFIT ORGANIZATION
U. S. POSTAGE PAID
PERMIT NUMBER 875
PEORIA, ILLINOIS